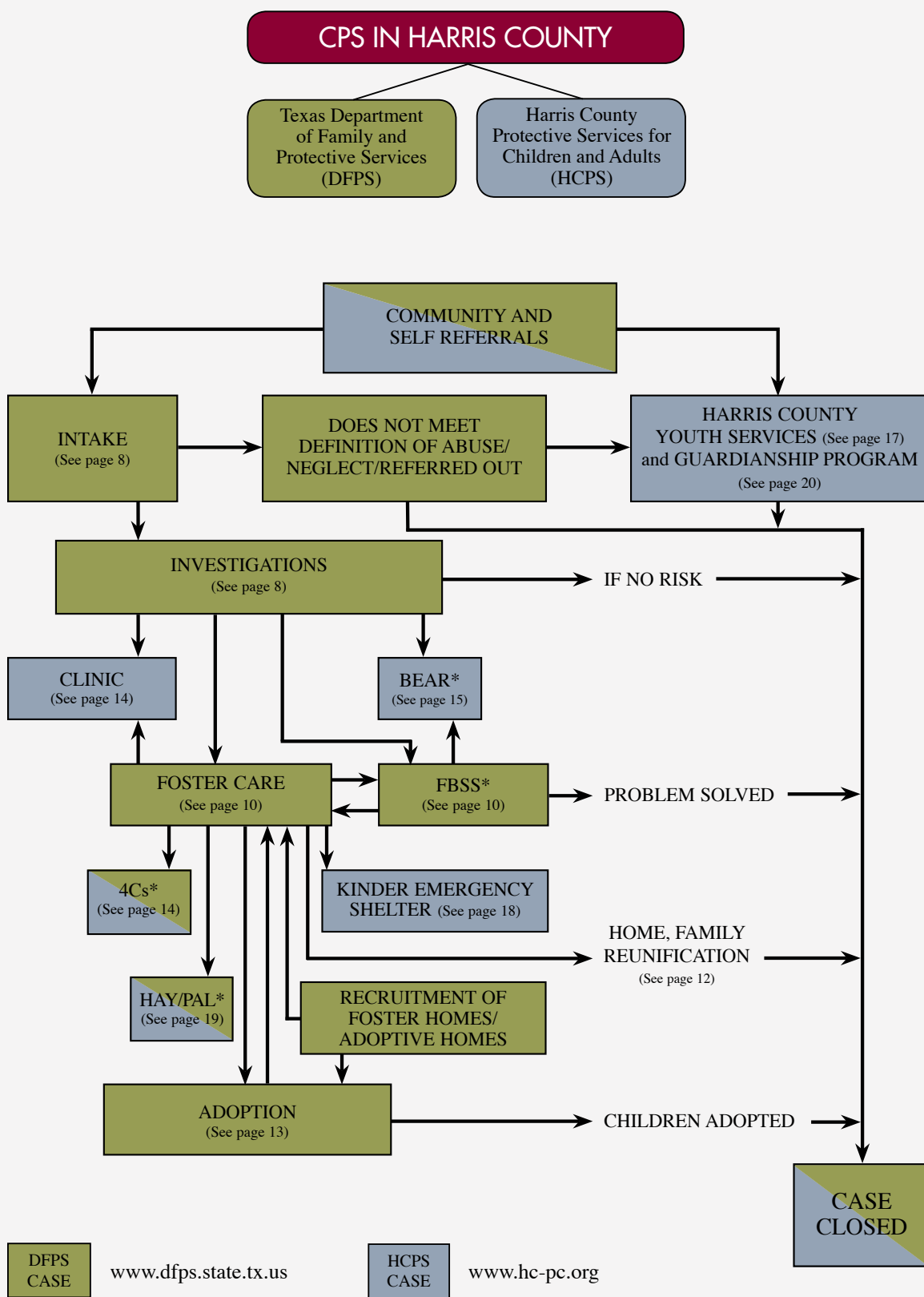


CPS IN HARRIS COUNTY ANNUAL REPORT

2009 STATISTICS • 2010 PROGRAM INFORMATION



A CHILD, YOUTH, FAMILY OR ADULT'S PATH THROUGH THE PROGRAMS OF CPS IN HARRIS COUNTY



*BEAR... BE A Resource for CPS Kids
*FBSS, Family-Based Safety Services

*4Cs, Children's Crisis Care Center
*PAL, Preparation for Adult Living

CPS in Harris County is pleased to present our 2009-2010 Annual Report. This report provides an overview of our programs and services, and 2009 statistics and funding of both Harris County Protective Services for Children and Adults (HCPS) and the Texas Department of Family and Protective Services (DFPS).



HCPS HIGHLIGHTS

In 2010, like many other government entities across the nation, we at HCPS are also faced with budgetary challenges. Due to the reduction in home values, revenues for Harris County are down and the impact of this reduction is expected to be felt at least through the next fiscal year. This will pose challenges for us and other county departments.

We currently have 30 general fund vacant positions that we are unable to fill in various programs due to the hiring freeze across all county departments. While we know that these vacancies are causing hardships for a number of our

programs, we are proud of our employees who have taken on additional duties and responsibilities to ensure that the needs of our clients are being met. As we go forward, our priorities will be to maintain our current level of services and see that staffing levels required by law, licensing standards and contracts are not interrupted. Due to the economy and the uncertainty of funding, the coming year will pose challenges for us. However, we have no doubt that our committed staff, with the support of our board and the community will meet the challenges we face ahead.



DFPS HIGHLIGHTS

During 2010, we have seen a rise in the number of child abuse and neglect reports and in the number of children needing to be removed from their own homes. Last year we saw an increase in the number of child abuse related fatalities in Texas. Harris County had the most dramatic increase with 67 child deaths, almost double the number of 35 from the previous year. Although we don't know the reasons for such an increase, DFPS began a Child Fatality Response Initiative designed to better understand and reduce preventable deaths.

However, perhaps due to economic circumstances, we have seen a significant reduction in turnover for CPS. Thus we have increased opportunities to help strengthen critical decision-making skills among new and experienced direct delivery staff. In order to better protect children,

CPS with the help of the National Resource Center for Child Protection and Casey Family Programs, launched a multi-year continuous quality improvement initiative. The Enhanced Family Centered Safety Decision Making initiative is designed to strengthen CPS safety decision making protocol, using a family centered approach, in all stages of service. This model supports staff in developing stronger family engagement skills so that they can understand family functioning to assess safety and risk more effectively. It clarifies our decision making process so that children will be safe, families will have intervention only when we know them and know they need it. Despite tough economic and budget challenges, CPS will continue to stretch available resources to keep children safe and strive towards improved outcomes for children and families.

Sean Kelly McPherson
Board President, HCPS

George Ford, LMSW-AP, J.D.
Executive Director, HCPS

Colleen McCall, LCSW
Interim CPS Regional Director

HARRIS COUNTY
COMMISSIONERS
COURT

TEXAS DEPARTMENT
OF FAMILY AND
PROTECTIVE
SERVICES

ACCREDITED



COUNCIL ON ACCREDITATION
OF SERVICES FOR FAMILIES
AND CHILDREN, INC.

CWLA CHILD
WELFARE
LEAGUE OF
AMERICA



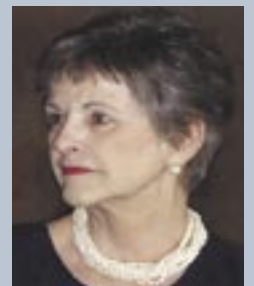
PROTECT & CONNECT

**HCPS 2010 BOARD OF DIRECTORS****Sean Kelly McPherson**, *President***Larry B. Litton, Sr.**, *Vice President***Philip J. Kunetka**, *Treasurer***Marilyn DeMontrond**, *Secretary***James A. Baker****James G. Olson****Frances Castaneda Dyess****Paula Price****Ron S. Davis**, MPA**Janet Stansbury**, M.Ed**Ernest Frugé**, PhD**Jo Ellen Sweeney****Charlene Hunter James****Kim Szeto****Jerry LeVias****HCPS 2010 ADMINISTRATIVE STAFF****George Ford**, LMSW-AP, J.D., *Executive Director***Joel A. Levine**, LCSW, *Director of Administration***Debra Andrews**, MA, *Director, Region 6 Training Institute***Janis Bane**, MS, *Interim Director, BEAR***Robert Lee Brewer**, LCSW, LCDC, LCCA, *Director,
Harris County Youth Services Center***Deborah Colby**, LCSW, LMFT, *Director, TRIAD
Prevention Program***Mary Green**, MA, *Director, Transitional Services***Ginger B. Harper**, LMSW-AP, *Director, Community
Youth Services***Randy Joiner**, LMSW-AP, LCPAA, *Director, Systems
of Hope***Jan McLaughlin**, RG, *Director, Guardianship Program***Willie Nelson**, RN, *Director, Medical/Dental Clinic***Estella Olguin**, *Community Relations Director***Beverly Pettway**, CPA, MBA, *Director of Financial and
Business Services***Kimberly Poré**, LCSW, *Director, Children's Services***John Prior**, LCSW, ACSW, *Program Improvement
Team Leader***IN MEMORIAM: Dianne Wilson Bynum***July 1, 1936 – March 6, 2010*

HCPS Board Member: 2002 -2010

HCPS Board President: 2008-2010

Dianne Bynum led a truly remarkable life. In 2002 Dianne joined the board of HCPS and was elected Chair in 2008. This strong, extraordinary woman will be missed by her family, friends and all of us at HCPS.





DFPS 2010 ADMINISTRATIVE STAFF FOR CPS HOUSTON REGION 6 (as of 8-17-2010)

C. J. Broussard-White, *Inter Regional Managing Attorney, Regions 4,5,6*

Gwen Carter, MSW, *Public Information Officer*

Bernadette Cashin, *Community Initiatives Specialist*

James H. Castille, MA, LBSW, LPC-Intern, *CPS Deputy Regional Director*

Frank Nguyen-Chinh, MSW, MA, *Service Program Administrator*

Michael Cutaia, MA, *CPS Regional Director Assistant*

Sheryl T. Dotson, LMSW-AP, *Program Administrator for Children in Custody in Harris County*

Deborah K. Green, MSW, CDVC-III, MAC, CCJS, BEI-1, *Service Program Administrator*

Catherine Guess, M.ED, LPC, LMFT, LCDC, LBSW, *Service Program Administrator*

Sandra L. Haire, MPA, LMSW, MSSW, *Program Administrator for Investigations and FBSS*

Ledra Johnson, *Resource and External Relations Specialist*

Lindy Levit, SPHR, *Regional Operations Support Administrator*

Shannon Manning, *CPS Regional Director Assistant*

Debra L. Page, MSW, *Program Administrator for Investigations and FBSS*

Josephine Robinson, MSW, *Program Administrator for Foster and Adopt*

Cheryl Triplett, MA, *Program Administrator for Investigations and FBSS*

Sharon Ballard, *Law Enforcement Liaison*

Sherryl Becker, M.S., LCDC, CSW, *Program Director for FBSS*

Kristina Belcher, BS, BBA, *Kinship Initiative Program Director*

Katara Butler, MSW, *Program Director for Children in Custody in Harris County*

Manett Butler, *Residential Team Placement Coordinator*

Ivy Chambers, BS, MA, *Program Director for Investigations*

Tonya Clay, MA, LPC-Intern, *Program Director for Children in Custody in Harris County*

Rosie Christal, *Program Director for CPS Senior Investigators*

Willis Corbin, *Program Director for CPS Senior Investigators*

Bettye Davis-Sanders, MSW, LBSW, *Program Director for Adoption Prep and CPU*

Jerry Dowse, *Program Director for CPS Senior Investigators*

Leshia Fisher, *Program Director for Children in Custody outlying counties*

Peggy Gartman, LMSW-AP, *Program Director for Children in Custody in outlying counties*

Bernita Hagan, *Program Improvement Specialist*

Cheryl Harvick, *Program Director for Investigations and FBSS*

Sheila Hazley, *Program Director for Children in Custody in Harris County*

Evelyn Jacobs, MSW, LMSW, *Program Director for FBSS for 10 outlying counties*

Keema Jones, *Program Director for Children in Custody in Harris County*

Patricia Johnson, LBSW, *Program Director for Adoption Preparation*

Renatta Kost, *Program Director for FBSS*

Deborah Kumar-Misir, LMSW, *Program Director for Investigations*

Natarsha Lewis, *Residential Team Placement Coordinator*

Lisa McCartney, CVS PD for Harris County Courts

Glenda Martin, *Program Director for Foster/Adopt*

Carolyn Polk, *Program Director for FBSS*

Angela Rhoden, MSW, *Program Director for Children in Custody in Harris County*

Krista Rodriguez, MSW, *Program Director for Investigations*

Shondra Rogers McGary, *Region 6 Disproportionality Specialist*

Monica L. Sanders, *Program Director for Investigations*

Karen Sheehan, *Risk Manager*

Barbara Shinall, LMSW-AP, *Lead Child Safety Specialist, Region 6*

Vanessa Shippard, *Risk Manager*

Doris Thomas-Buckler, Ph.D., BCCC, *Program Director for FBSS*

Debra Thornton, *Program Director for Investigations*

Cindy Umlang, LMSW-AP, *Program Director for Investigations*

Jarita Wharton, LBSW, MSW, *Program Director for Investigations*

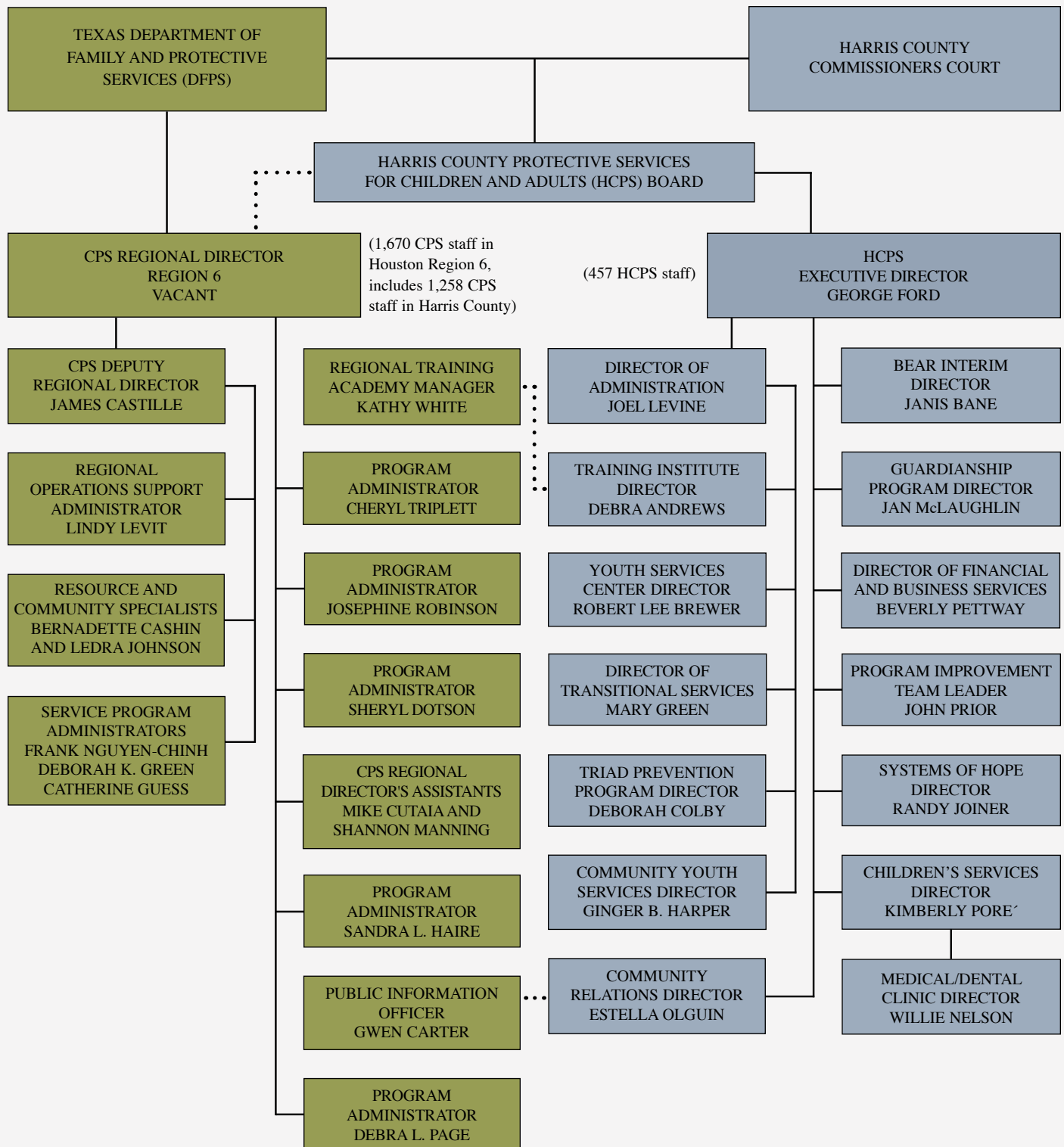
Kathy White, BSW, MA, *Training Academy Manager*

Diana Wilson, *Program Director for Investigations*

Kimberly Wiseburn, MSW, *Program Director for Investigations*

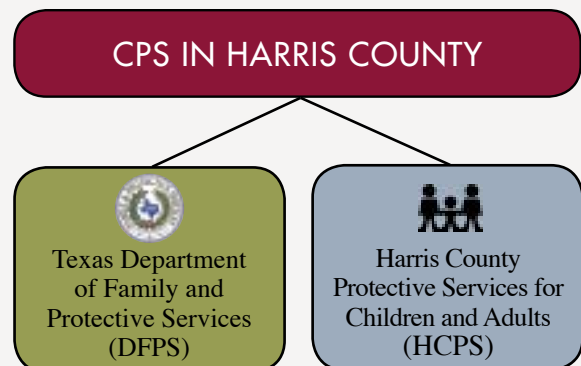
Mia Williams, MA, *Region 6 Disproportionality Specialist*

Jennifer C. Williams, MA, *Lead Child Safety Specialist, Regions 6 & 3*



While Child Protective Services (CPS) in Texas is a state-managed program through the Texas Department of Family and Protective Services (DFPS), there has been a tradition of county-level involvement since 1966 in Harris County.

In a unique governmental collaboration, protective services for children and adults in Harris County are seamlessly provided by the state of Texas, acting through DFPS, and Harris County through Harris County Protective Services for Children and Adults (HCPS).



The Texas Department of Family and
Protective Services (DFPS)
www.dfps.state.tx.us

Harris County Protective Services for
Children and Adults (HCPS)
www.hc-ps.org



THE TEXAS DEPARTMENT OF
FAMILY AND PROTECTIVE
SERVICES (DFPS)
www.dfps.state.tx.us

The Texas Department of Family and Protective Services serves the state's youth, families, elderly and people with disabilities. The DFPS mission is to protect children, the elderly and people who have disabilities from abuse, neglect and exploitation by working with clients, families and communities. DFPS works to accomplish that mission through four programs: Child Protective Services (CPS), Adult Protective Services (APS), Child Care Licensing (CCL), and Prevention and Early Intervention (PEI) programs. DFPS is an agency of the Texas Health and Human Services Commission.

THE RESPONSIBILITIES OF THE CHILD PROTECTIVE SERVICES (CPS) PROGRAM OF DFPS ARE TO:

- Conduct civil investigations of reported child abuse and neglect,
- Protect children from abuse and neglect,
- Promote the safety, integrity and stability of families,
- Provide permanent placements for children who cannot safely remain with their own families.



HARRIS COUNTY PROTECTIVE
SERVICES FOR CHILDREN
AND ADULTS (HCPS)
www.hc-ps.org

The Vision of Harris County Protective Services for Children and Adults (HCPS) is to better the lives of children and adults in Harris County.

HCPS' MISSION IS TO:

- Provide direct services to children not served by DFPS,
- Provide support services designed to enhance the efficiency of the DFPS program,
- Provide guardianship services to adults,
- Advocate for Harris County's children and adults.

HCPS, a county department advocating for Harris County children and adults, works to accomplish its mission through three programs: Guardianship Services; Youth Services, i.e. Kinder Emergency Shelter, Community Youth Services, Preparation for Adult Living, Systems of Hope, and the TRIAD Prevention Program; and Children's Services, i.e. BEAR...BE A Resource for CPS Kids, Children's Crisis Care Center, Medical and Dental Clinic and the Training Institute.

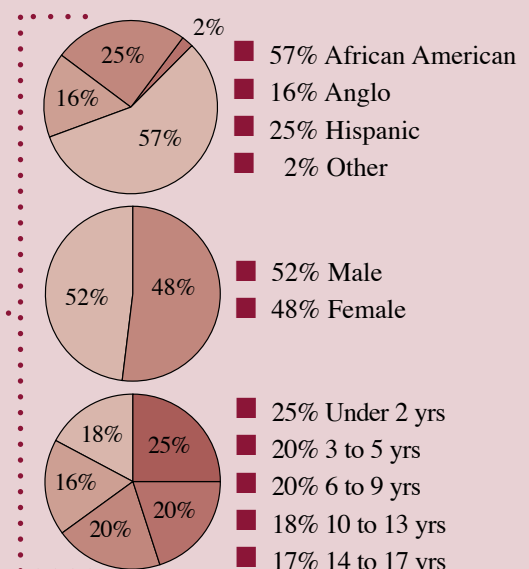
TOTAL CHILDREN SERVED MONTHLY

Approximate number of children receiving services from CPS in Harris County per month in 2009, including those children serviced in DFPS and HCPS programs.

Completed investigations (children).....	4,500
Receiving Family-Based Safety Services (children).....	5,400
In Protective Custody (children).....	5,000
(See Breakdown charts at right)	
Receiving TRIAD Prevention Program Services (youth).....	1,800
Receiving CYS Services (youth).....	5,500

Total (Approximate number of children served per month by CPS in Harris County) 22,200

BREAKDOWN OF (CHILDREN) IN PROTECTIVE CUSTODY



Harris County Child Population for Year 2009: 1,070,831**CHILD PROTECTIVE SERVICES (CPS) PROGRAM OF
THE TEXAS DEPARTMENT OF FAMILY AND PROTECTIVE SERVICES (DFPS)****CPS Program of DFPS 2009 Activities ¹ - FY September 1, 2008 through August 31, 2009**

Intakes of child abuse and neglect assigned for investigation		25,428 ²
Completed investigations	families	20,671 ²
	alleged victims	34,277
	total children	47,867
Children adopted	in Region 6 ³	933
Children served in Family-Based Safety Services		11,807
Children taken into protective custody		1,866
Total children in protective custody	as of August 31, 2009	4,962
Foster and Foster/Adopt Homes	as of August 31, 2009	188

1 Source: DFPS Forecasting and Program Statistics.

2 The difference between Intakes and Completed investigations is the families currently under investigation or investigations merged or administratively closed.

3 Houston Region 6 includes Harris County and 12 surrounding counties.

Additional information
can be found at:
www.dfps.state.tx.us/statistics

HARRIS COUNTY PROTECTIVE SERVICES FOR CHILDREN AND ADULTS (HCPS)**HCPS 2009 Activities ⁴ - January 1, 2009 through December 31, 2009**

BEAR...BE A Resource for CPS Kids ⁵	CPS children served in BEAR Necessities	10,905
	CPS children served in BEARing Gifts	7,400
	CPS children served in Back to School	5,000
	in-kind and cash contributions	\$1,162,568
Children's Crisis Care Center (4Cs)	children evaluated	1,076
	families assessed	526
	Family Group Decision-Making conferences	661
	Permanency Planning Team meetings	3,005 ⁶
Community Youth Services (CYS)	youth referrals	9,358
	parents and teens in Survival Skills	276
Student Support Services		57,280
Guardianship Program	adult wards as of Dec. 31, 2009	1,432
Kinder Emergency Shelter	youth sheltered	366
Medical-Dental Clinic	children served	3,748
Preparation for Adult Living (PAL)	youth served in Harris County ⁷	1,049
TRIAD Prevention Program	at-risk youth served	22,061 ⁸

4 Source: The new EVOLV Database System

5 Some children are served by multiple programs.

6 Special professional teams to ensure that children do not linger in foster care.

7 PAL served youth during DFPS fiscal year.

8 Refer to page 19 for breakdown

Additional information
can be found at:
www.hc-ps.org

For more information on services, go to:
www.dfps.state.tx.us/child_protection

INTAKE

State law requires anyone who believes a child is being abused or neglected to report the situation to the DFPS' Texas Abuse Hotline, also known as Statewide Intake. DFPS administers a toll-free, 24-hour statewide hotline (1-800-252-5400) located in Austin, Texas for reporting suspected abuse and neglect of children, the elderly, or people with disabilities. Reports can also be made on-line through a secure website at www.txabusehotline.org. Law enforcement agencies are also notified of reports regarding children.

In FY 2009, CPS in Harris County assigned 25,428 intakes of child abuse and neglect for investigation. All reports meeting the statutory definitions of abuse and neglect are assigned a priority based on the level of risk to the alleged victim. The highest priority reports (P1) must be responded to within 24 hours. Priority 2 cases must be responded to within 72 hours.

INVESTIGATIONS

When an intake report is assigned, CPS workers interview children, parents and others with knowledge of the family. These interviews help determine if child abuse or neglect has occurred and assess the risk of further harm to the child. If criminal conduct is involved, law enforcement may investigate at the same time to determine if criminal charges will be filed. Even if evidence of abuse or neglect is not found, caseworkers may refer families to services in the community, such as individual or family therapy, parenting classes, medical assistance, mental health services, or programs offering financial assistance for utilities, rent, and child care.

To help strengthen investigations, subject matter experts are available to assist caseworkers in conducting investigations and assessing risk and safety of children. Special investigators, for example, are CPS investigators with law enforcement forensic investigation experience. They provide assistance to investigation caseworkers on child deaths and serious or complex cases either by consultation, training, or by conducting certain parts of the investigation. Other subject matter experts include child safety specialists who have expertise in assessing risk and safety of children, substance abuse experts, immigration specialists, nurses,

PROTECT & CONNECT

youth specialists, and investigations screeners who provide additional review when CPS reports are received.

The Child Protective Services Point of Entry, located at the Harris County Youth Services Center, helps to coordinate investigations for victims of physical abuse or neglect 24 hours per day, seven days per week. Victims of sexual abuse are referred to the Children's Assessment Center for investigation by CPS staff, law enforcement, medical professionals, specialized interviewers and therapists.

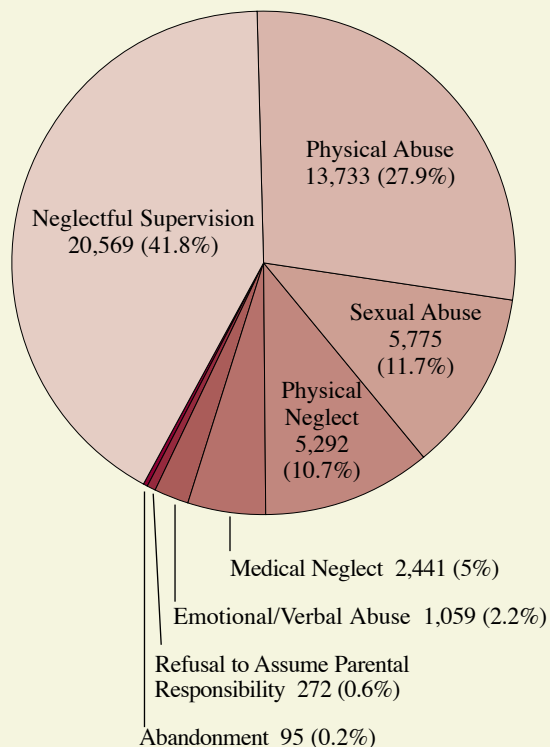
During FY 2009, CPS in Harris County completed 20,671 investigations. 6,671 children were confirmed to have been abused or neglected in Harris County. The rate of confirmed abuse/neglect victims in Harris County was 6.2 per 1,000 children. In Texas, 10.5 children per 1,000 were confirmed as child abuse/neglect victims.

For more information on Investigations, go to:

http://www.dfps.state.tx.us/Child_Protection/About_Child_Protective_Services/investigation.asp

BREAKDOWN OF TYPES OF ABUSE/NEGLECT OF ALLEGED VICTIMS IN COMPLETED INVESTIGATIONS

The total exceeds 34,277 alleged victims in completed investigations in 2009 since children may have more than one type of abuse/neglect allegation.



COMPLETED CPS INVESTIGATIONS IN HARRIS COUNTY

FY 2005

intakes	25,856
families	20,976
alleged victims	33,675
total number of children	46,326

FY 2006

intakes	25,915
families	21,439
alleged victims	35,033
total number of children	47,438

FY 2007

intakes	25,564
families	20,690
alleged victims	34,013
total number of children	46,669

FY 2008

intakes	26,225
families	21,547
alleged victims	35,388
total number of children	48,683

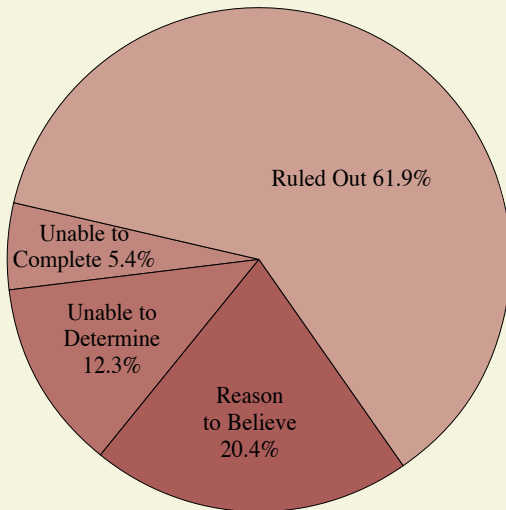
FY 2009

intakes	25,428
families	20,671
alleged victims	34,277
total number of children	47,867

The difference between Intakes and Completed Investigations is the families currently under investigation or investigation merged or administratively closed.

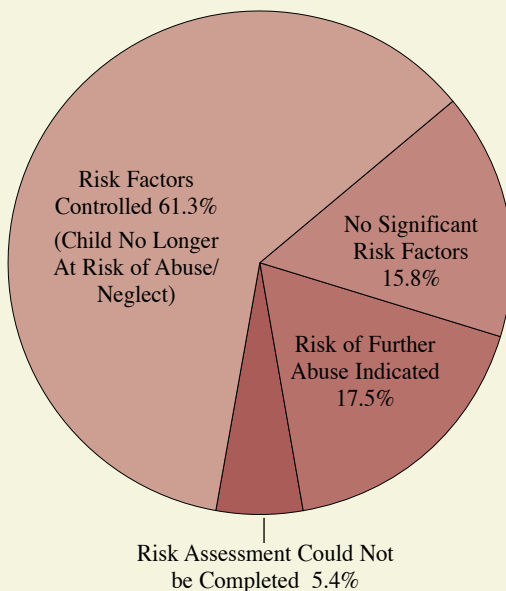
FINDINGS OF ALLEGATIONS IN FAMILIES IN COMPLETED INVESTIGATIONS

During FY 2009, 20,671 family investigations were completed.



CPS investigations help determine if child abuse or neglect has occurred and assess the risk of further harm to the child.

OUTCOME OF RISK ASSESSMENT OF CHILD ABUSE/NEGLECT IN FAMILIES IN COMPLETED INVESTIGATIONS



FAMILY-BASED SAFETY SERVICES (FBSS)

When child safety can be reasonably assured, CPS provides in-home services to help stabilize the family and reduce the risk of future abuse or neglect. Services provided include family counseling, crisis intervention, mental health services, parenting classes, substance abuse treatment and childcare. Most children served by FBSS continue to live at home while CPS works with their families. In other cases, children may live elsewhere temporarily, usually with relatives or family friends, until the home becomes safe enough for the children to return.

In FY 2009, 11,807 children in Harris County received family-based safety services, including purchased services, in their own homes. In 2009 an average of 5,400 children per month received in-home services.



FOSTER CARE

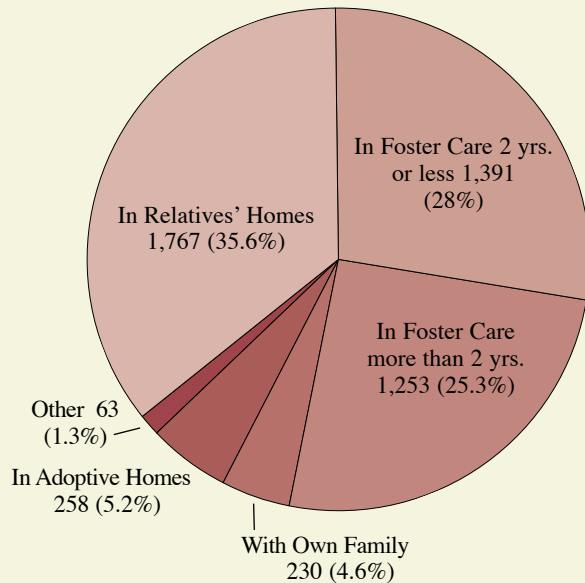
When it is not safe for children to live with their own families, CPS petitions the court to remove the children from their home. They may be placed temporarily in kinship care, a verified foster family, an emergency shelter, or another foster care facility. Foster families provide a safe, nurturing environment for children in CPS care. Foster families receive reimbursements for the costs associated with caring for children. CPS and the foster parents are required to arrange all medical, dental, and therapeutic services needed by the child. Some children have emotional or other needs that can be difficult to address in a foster home. These children may be placed in specialized group homes, residential treatment centers, or other facilities that best meet their needs. In 2009 the average number of children in foster care in Harris County each month was 5,000.

For more information on foster care go to:

www.dfps.state.tx.us/Child_Protection/Foster_Care

LOCATION OF CHILDREN IN DFPS PROTECTIVE CUSTODY IN HARRIS COUNTY

At the end of FY 2009, 4,962 children were in the state's Managing Conservatorship (custody) in Harris County.

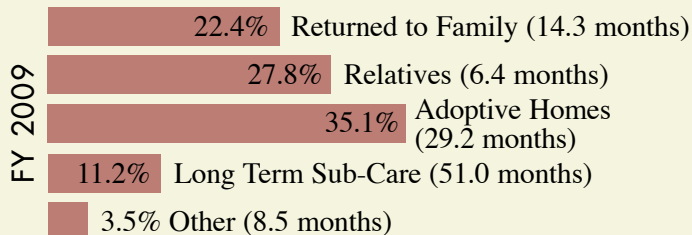


FAMILY GROUP DECISION MAKING (FGDM)

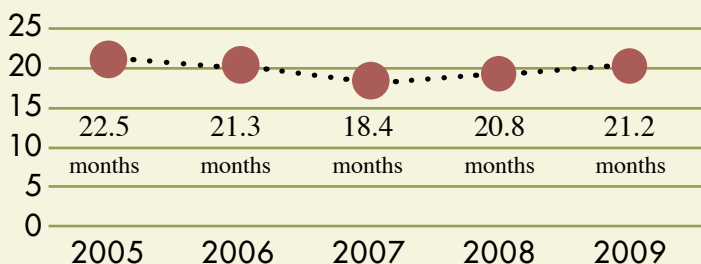
Family Group Decision Making is part of the CPS Family Focus Initiative. The goal is to enhance safety, permanency, and well-being for children by providing direct services and support services to their caregivers. CPS protects children and acts on their behalf. At the same time, CPS thinks all families have strengths. Families know their children best and want them to be safe. FGDM describes a variety of practices to work with and engage families in problem solving including Family Team Meetings and Family Group Conferences.

If the children are still living with their own families, CPS may set up a meeting called a Family Team Meeting (FTM) as a rapid response to child safety and placement concerns. It is used to achieve positive outcomes for children in the earliest stages of interaction between CPS and families. Families can invite anyone who is important in their children's lives to be part of this planning team.

A Family Group Conference (FGC) happens most frequently when children have been temporarily removed from their families. Families join with relatives, friends, and others in the community to develop a plan to ensure children are cared for and protected from future harm. It is up to the family to decide if they want to have one. In Region 6, either through Family Group Decision-Making or a Permanency Planning Team, this coordination is by the Children's Crisis Care Center (page 14).



The average length of time children were in state custody in Harris County until placed in a permanent living arrangement during FY 2009 was 21.2 months



Comparison of total average length of time children in custody 2005 - 2009

For more information on Family Group Decision Making, go to:
http://www.dfps.state.tx.us/Child_Protection/About_Child_Protective_Services/fgdm.asp

DISPROPORTIONALITY

Since 2004, CPS has addressed the disproportionate representation of African-American and Native American children in the child welfare system, also known as "disproportionality." Efforts to reduce this over representation contributed to less children being removed, an increase in kinship care placements, and an increase in children being served in their own home. CPS is partnering with community organizations and using data to reduce disparate outcomes. Specialized staff members in this region help guide this work.



FAMILY REUNIFICATION

During FY 2009, 2,002 children in CPS custody in Harris County were placed in a permanent living arrangement. With court approval, 22.4% of the children were returned to their own families, 27.8% were placed with relatives, and 35.1% were placed in adoptive homes.

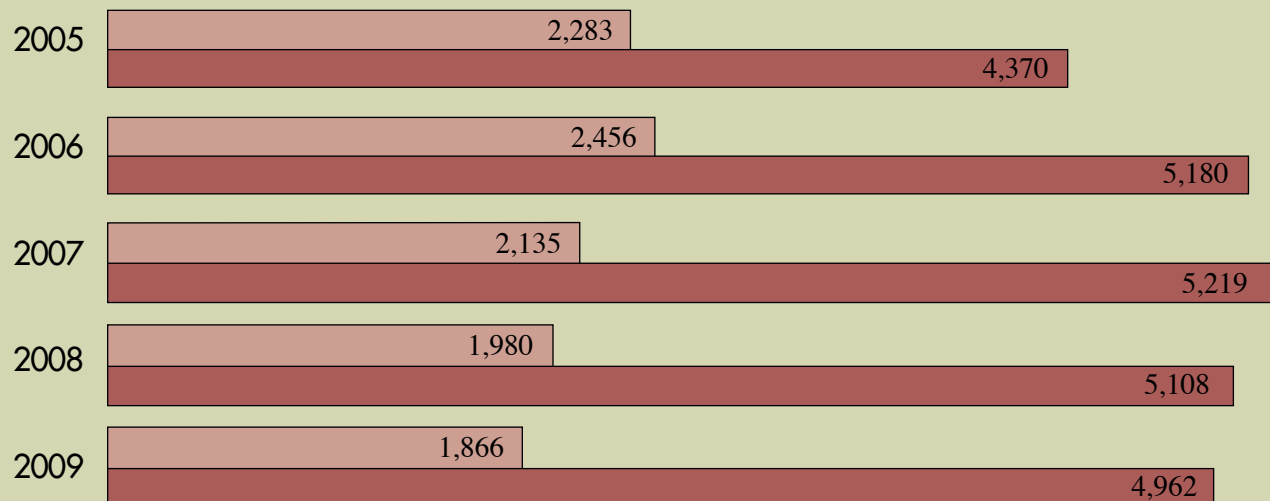
KINSHIP

For generations, extended families have played a significant role in the rearing of children when parents are having a difficult time. When removing children from their homes to ensure immediate safety, DFPS and the courts are required to consider temporary placements with safe relatives and to ask parents to provide information on relatives who may be able to care for the children. Referred to as kinship care or relative care, in CPS, these caregivers provide children the benefit of more stability when they cannot live with their birth parents. Kinship placements move children out of foster care and into the care of relatives, helping children stay connected to their families and their communities. The CPS kinship program supports relative caregivers by assisting with initial costs of accepting a child and through ongoing case management. In FY 2009, an average of 1,800 children were residing in a kinship placement each month in Harris County.

For More Information about Kinship, go to:

http://www.dfps.state.tx.us/Child_Protection/Kinship_Care/

- Children Taken Into Protective Custody During Fiscal Year
- Children in Protective Custody at End of Fiscal Year



Source: DFPS Forecasting and Program Statistics

ADOPTION

When it is not possible for a child to return home, the court may terminate the parents' rights and legally make the child available for adoption. In 2009, DFPS completed 933 adoptions in Houston Region 6 (Harris County and the 12 surrounding counties). DFPS contracts with over 100 licensed private child-placing agencies to increase the number of adoptive homes available to adopt foster children.



CPS recruits foster parents and adoptive families through local, state, and national campaigns and through the Texas Adoption Resource Exchange (TARE) website. TARE is the department's leading recruitment tool for prospective foster and adoptive homes. TARE provides information on children waiting to be adopted. Photos, profiles, videos, and inquiry forms are available at www.adoptchildren.org

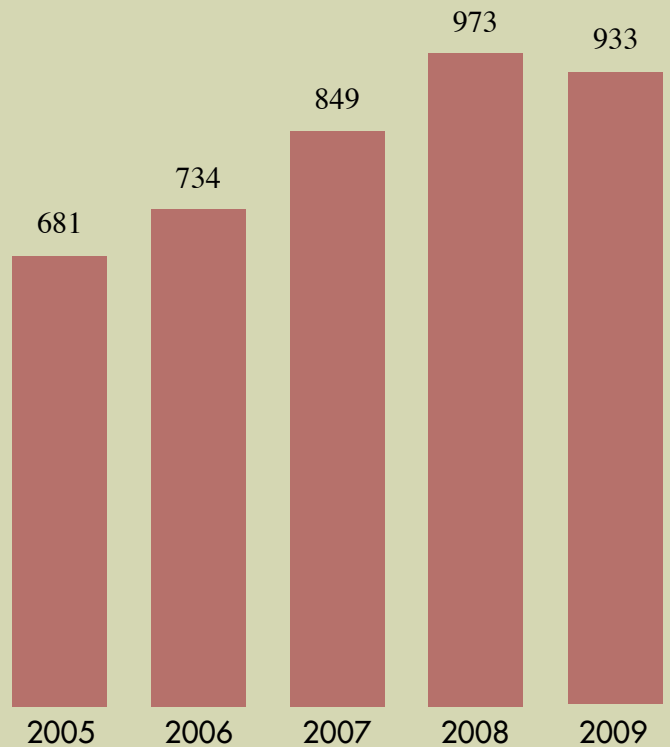
The TARE toll-free nationwide inquiry line (1-800-233-3405) receives about 2,500 to 3,500 calls a month from prospective foster and adoptive families.

Other examples of recruitment efforts include:

- Foster Care Month activities in May across the state.
- The "Why Not Me?" campaign uses advertising, news coverage, and community engagement to encourage families to foster or adopt older children.
- Adoption Awareness Month activities in the month of November, such as mass adoptions events. These celebrations were created by working with the juvenile courts, adoptive families, attorneys, and others to schedule adoptions hearings in November and using media coverage to encourage families to become adoptive parents.
- Recruitment drives by partners such as child placing agencies and Heart Galleries.

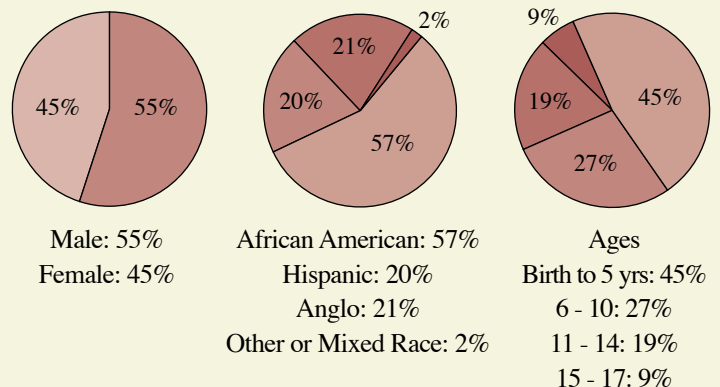
Adopted children who have suffered abuse or neglect often need help coping with the effects of these experiences and the loss of their birth families. Region 6 contracts with private agencies to provide post-adoption services to adopted children in their new families, including case management, mental health, therapeutic services, parent training, support groups and respite care for adoptive parents.

ADOPTIONS COMPLETED IN HOUSTON REGION 6



WAITING
www.adoptchildren.org
 1-800-233-3405

1,689 children in the Houston Region are waiting to be adopted.*



* As of July 31, 2010



THE CHILDREN'S CRISIS CARE CENTER



The Children's Crisis Care Center (4Cs) is a community collaboration focused on meeting the unique needs of each physically abused and neglected child entering CPS custody. This service is only available to children referred by DFPS.

The Children's Crisis Care Center, with 32 staff, 24 contracted professionals, and interns from local graduate programs, is structured into three program teams: Children, Family and Permanency Planning.

DURING 2009:

Children assessed	1,076
Families assessed	526
Permanency Planning Team meetings	3,005
(For each custody child in Region 6)	
Family Group Decision-Making conferences	661

For complete information on 4Cs and its programs go to:
www.hc-ps.org

HCPS CLINIC

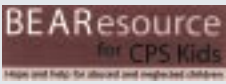


HCPS Clinic, which is located at the Youth Services Center, is available to all child clients of DFPS and HCPS and operates with the University of Texas Medical School.

During 2009, 3,748 children were provided services at the HCPS Clinic. 2,379 children received medical services and 1,369 received dental services. Services included helping caseworkers identify suspected child abuse/neglect, providing medical and dental services to children in foster care and the Kinder Emergency Shelter, as well as various medical presentations and trainings.

The Clinic also performed drug screens on adult clients connected with the children we serve, when requested by the caseworkers. During 2009, drug tests were administered to 4,176 adult clients.

BEAR



The mission of BEAR, which stands for BE A Resource for CPS Kids, is to offer help and hope for abused and neglected children and the caseworkers who protect them. BEAR is a 501(c)(3) public/private partnership that provides goods and services to children under the care of CPS in Harris County. BEAR is very fortunate to have support from the State and County as well as numerous generous individuals, corporations, churches and foundations. In 2009, BEAR received \$1,162,568 in cash and in kind donations.

During 2009, BEAR Necessities, emergency supply rooms co-located in seven CPS offices, served 10,905 children and BEARing Gifts, which provides holiday gifts to CPS kids, served more than 7,400 children. The BEAR Back to School program provided school uniforms and supplies to over 5000 children. BEAR also sponsored its second graduation party for CPS/PAL (Preparation for Adult Living) children graduating from high school and/or college and aging out of foster care. Some children with open CPS cases are served by all programs each year.

In 2009 54 year-round volunteers assisted in the BEAR rooms, 149 volunteers assisted with BEAR Back to School and more than 400 volunteers participated in BEARing Gifts. Volunteers ensure that BEAR is able to serve as many children as possible.

For more information about BEAR and opportunities to get involved, go to:

www.bearesourcehouston.org



REGION 6 TRAINING INSTITUTE



The Region 6 Training Institute (TI) consists of both HCPS and DFPS employees. The Training Institute provides a variety of training courses and staff development opportunities for all levels of HCPS and DFPS staff, including: Basic Skills Development (BSD) Courses designed for new DFPS/CPS workers, Management Training, and a wide range of continuing education courses of interest for HCPS workers and supervisors. The Training Institute also provides Computer Based - Basic Skills Development classes for all new Guardianship Caseworkers and continuing education classes designed specifically for our geriatric care managers and supervisors. Each year the TI, along with its community partners, hosts an annual conference for our administrative support staff. The framework for this conference was modeled to show support for our Administrative support professionals by demonstrating a “reversal of service” where Harris County CPS administrators and others spend a day serving those who spend their time serving others. On this day, our support staff attends some much needed staff development training while their managers either work as volunteers during the conference or they provide coverage for the office.

During 2009, Region 6 Training Institute provided 114 workshops for 2,303 participants. A total of 244 new state CPS caseworkers successfully completed the BSD program. BSD is a 12 week intensive training program consisting of classroom core training, On-the-job training with veteran caseworkers, and specialized training tracks for such concentrations as Investigations, Family Based Safety Services, and Conservatorship services.

In 2007, The Region 6 Training Consortium was formed. The Consortium is a collaboration of 11 private agencies, non-profit organizations, for profit business groups, and government entities, who provide training and workshops designed to enhance the personal, professional, and organizational performance of our staff.

SYSTEMS OF HOPE



Harris County Systems of Hope (SOH) is a project funded by SAMHSA and the Hogg Foundation for Mental Health to develop a county-wide system of care to assist children and youth, from age 6 to 15, with severe emotional disturbance and their families. The program utilizes the wraparound process, which includes:

- Family driven/families as partners
- Youth guided
- Culturally and Linguistically Competent
- Individualized and strength based
- Community based
- Collaborative
- Flexible funding
- Balance of formal and informal supports
- Unconditional commitment
- Outcomes determined and measured.



The SOH initiative collaborates with other child serving agencies in Harris County including Harris County Juvenile Probation Department, DePelchin Children's Center, Mental Health and Mental Retardation Authority of Harris County, the City of Houston, and the Texas Department of Family and Protective Services.

SOH Care Teams, consisting of a Care Coordinator and a Parent Partner, assists families throughout Harris County. The teams provide support for the youth and families through the use of traditional and non-traditional services. The SOH Youth Advisory Council (YAC) ensures that the youth in the program have a voice and the Parent Empowerment Group (PEG) ensures that families have a voice. Both YAC and PEG meet monthly. Family members and youth actively participate in all aspects of system development, including governance and evaluation.

A national evaluation of the project supports the effectiveness of Systems of Hope through the following outcomes:

- Improved school attendance and performance
- Stabilized living situations
- In-patient hospitalization days per youth decreased
- Caregivers report overall improvement in family functioning
- Decrease in substance abuse.

For more information on Systems of Hope contact:

713-795-HOPE

www.systemsofhope.org

DEMOGRAPHICS

Total Number of Children Served: 175

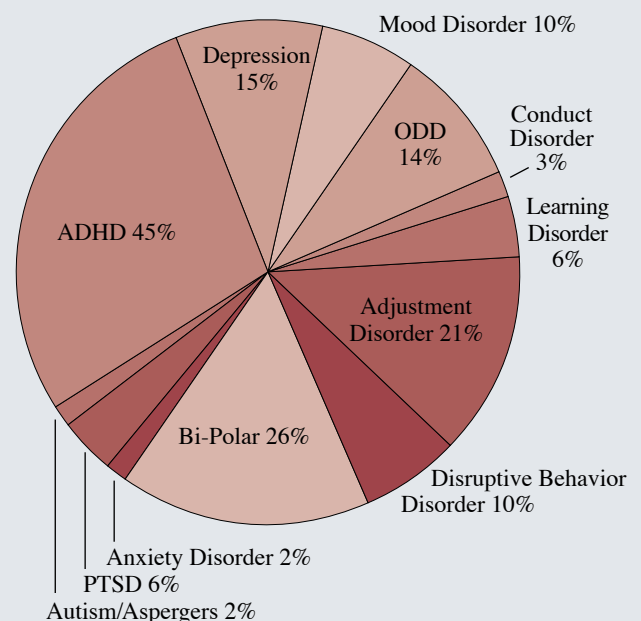
■ Female: 21% ■ Male: 79%

RACE AND ETHNICITY

■ African American: 47% ■ Hispanic: 33%
■ Anglo: 18% ■ Asian: 1% ■ Other: 1%

DIAGNOSIS

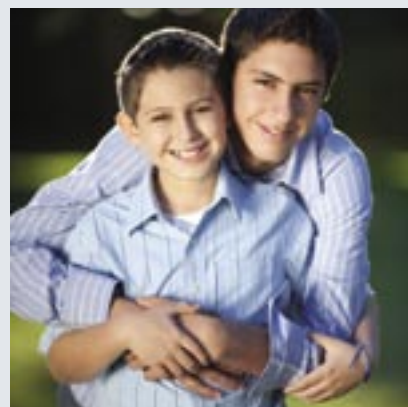
46% youth have two or more Axis I diagnoses.





The Harris County Youth Services Center (YSC) is a “hub” of support services for children and youth needing help. The facility, located at 6300 Chimney Rock, allows the various agencies housed at the YSC to better coordinate the many services they offer.

Located in the building is staff from HCPS (Kinder Emergency Shelter, CYS, TRIAD Prevention Program, Medical/Dental Clinic and BEAR), the DFPS’ Child Protective Services Point of Entry, Harris County Juvenile Probation Department, DePelchin Children’s Center and Systems of Hope.



COMMUNITY YOUTH SERVICES (CYS)

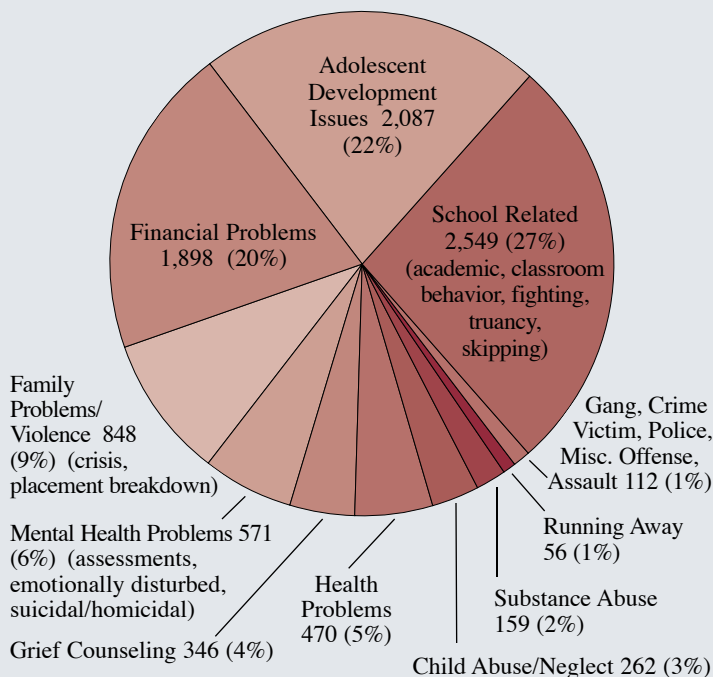


Community Youth Services (CYS) began as a diversion program of the Harris County Juvenile Probation Department in 1970, funded through a Criminal Justice Delinquency Prevention Grant with the Office of the Governor. It was established as the delinquency prevention component of local school districts, Juvenile Probation, Harris County Protective Services (HCPS), and the police to provide a community based agency to identify troubled (at-risk) youth and provide free voluntary services before court action became necessary. It has continued in that role by addressing the social, economic and academic need of “status offenders” (i.e. runaway, truant, and some misdemeanor offenses) and at-risk youth experiencing problems in school and/or at home. Before 1970, these offenses were treated as crimes; however, in the late 1970’s the national thrust was to treat them as social problems, shifting jurisdiction from Probation to Protective Services. As a result, Community Youth Services officially became a program of HCPS on May 1, 1979. The CYS Program started with Goosecreek Consolidated School District in Baytown, Texas. September 2010, will mark 40 years of CYS serving Harris County children, youth and their families.

CYS, a crisis intervention and case management program,

REASONS FOR NEW REFERRALS TO CYS

During 2009, staffed served 9,358 new youth referrals.



with 93 staff members, offers free, voluntary assistance to at-risk children and youth and their families. Seventy-six of the CYS staff members have a unique shared funding partnership with 16 school districts as well as the Pasadena Police Department, the Educational Services division of the Harris County Juvenile Probation Department and the Community Education Partners Charter School. The goal of this program is to prevent at-risk youth from becoming victims of child abuse, running away, and dropping out of school or entering into delinquent behavior. Additional, CYS provides support services to runaway/homeless youth through the Safety Net Program, and conflict resolution/mediation to youth and their parents through the Parent/Teen Survival Program. During 2009, 509 parents and teens completed the course. For more information go to www.hc-ps.org.

CYS staff served 9,358 youth referrals.

CYS staff provided an additional 57,280, Student Support Services to students at school or in the community not related to open cases. Students may participate in multiple outreach event services.

KINDER EMERGENCY SHELTER



The Nancy and Rich Kinder Emergency Shelter is an emergency residential facility that provides short-term care to children, ages 12-17, who are in need of shelter and care due to abuse or neglect or severe family conflict that prevents the youth from being safely reunited with their family. Youth stay at the shelter until they can be safely returned home or to another long-term placement. During 2009, 366 youth were placed in the 24 bed shelter by caseworkers from DFPS/CPS, CYS, Systems of Hope and the TRIAD Prevention Program.

THE DIVERSITY OF THE YOUTH SHELTERED INCLUDED

■ 50% Female ■ 50% Male.

RACE AND ETHNICITY

- 46% African American
- 32% Anglo
- 17% Hispanic
- 5% Other Races
- <1% Asian

REFERRAL RESOURCE

- 91% DFPS
- 3% TRIAD
- 3% Harris Co. Juvenile Probation
- 2% CYS
- 1% SOH

TRIAD



During 2009, 22,061 at-risk youth were served.

TRIAD Prevention Program is a consortium of three county agencies (Protective Services for Children and Adults, Juvenile Probation and Mental Health/Mental Retardation Authority) working together to coordinate their resources to serve at-risk youth. TRIAD provides countywide prevention and early intervention services to divert youth and families from involvement with the CPS, mental health and/or juvenile justice systems.

Phone calls coming into three hotlines are handled by TRIAD Intake Diversion staff 24-hours a day: the Baby Abandonment Prevention Hotline, the TRIAD hotline and STAR* hotline. A total of 2,365 hotline calls were handled by TRIAD staff in 2009.

TRIAD PREVENTION PROGRAM AT-RISK YOUTH SERVED IN YEAR 2008

JP Court Program	13,663
Truancy Learning Camp	76
Services To At-Risk Youth (STAR)*.....	369
Parenting with Love and Limits (PLL).....	100
Intake/Diversion	1,918
Mental Health Services	54
Community Youth Development (CYD)*.....	3,516
Hotline Calls	2,365
<hr/>	
TOTAL	22,061

*STAR, CYD and the Universal Child Abuse Prevention Project are programs that are funded by Texas Department of Family and Protective Services.

For more information on
TRIAD Prevention Programs, go to:
www.hc-ps.org

PAL



The Region 6 Preparation for Adult Living (PAL) Program, consisting of HCPS and DFPS staff members, helps make the transition to adulthood successful for youth in foster care. PAL services include independent living assessment, time-limited financial help, and training in such areas as money management, job skills, educational planning and interpersonal skills.

In 2009, 1,449 youth from Region 6 (1,049 from Harris County), ages 14 through 20, received services through the PAL Program. Through funds of the federal Chafee Foster Care Independence Act, PAL provided aftercare room-and-board assistance and case management services for young adults ages 18 through 21 who have exited foster care.



HAY CENTER



The Houston Alumni and Youth Center (HAY) moved to its new location at 1906 Cochran Street in Houston. In 2009, HAY served 657 young adults between the ages of 16 to 25. The HAY Center

provides a one-stop transition center for foster youth and former foster youth still in need of employment, education or support. HCPS staff members provide employment, education, counseling, substance abuse treatment, parenting classes, and limited financial assistance in conjunction with PAL staff and numerous partner agencies to empower foster youth and alumni to become successful, productive adults.

For more information about
PAL Services or the HAY Center go to:
www.haycenter.org or call (713)884-3300.



THE HARRIS COUNTY GUARDIANSHIP PROGRAM (HCGP)



provides guardianship services to adults who are determined by one of Harris County's four Probate Courts to be incapacitated. Specially trained case managers ensure that the wards maintain the highest degree of independence, dignity and respect, while protecting them from abuse, neglect, and exploitation. They also provide appropriate management of wards' property, finances, and daily needs such as food, clothing, shelter, and medical care. Guardianship services continue until the wards improve to a point where the court finds them fully capable of handling their own affairs; until the court appoints successor guardians, such as family or friends; or until the wards pass away. At the end of December 31, 2009, there were 1,432 court-appointed wards in the Guardianship Program.

The guardianship program began administering the Representative Payee Program (RPP) in September 2007. The Representative Payee Program is a case management program designed to assist eligible low-income Harris County adults who are elderly, physically, or mentally disabled with financial management so they can remain living independently in the community. A case manager with the Guardianship Program is responsible for paying the client's monthly rent and bills and verifies that the basic needs of the client are met.

Community volunteers, such as the Guardianship Angels, also play a significant role in the lives of HCGP wards and representative payee clients by either giving of their time, talents or resources.

For more information and opportunities to get involved, **contact the Guardianship Program at 713-363-2300.**

THE DIVERSITY OF THE WARDS INCLUDED

■ 47% Female ■ 53% Male

INCAPACITIES

- 26% Developmental Disability
- 30% Mental Deterioration
- 34% Mental Illness
- 10% Physical Incapacity

WARDS BY AGES

- <1% - 18 to 21 yrs
- 17% - 22 to 39 yrs
- 41% - 40 to 59 yrs
- 27% - 60 to 79 yrs
- 15% - 80 yrs and over

PROTECT & CONNECT

Total Number of wards as of December 31, 2009: 1,432

CPS IN HARRIS COUNTY 2009 FUNDING

	DFPS* DFPS Funds in Harris Co.	HCPS**					Combined Funding in Harris County
		State	Harris County	Federal	Others	Total HCPS	
Staff Salaries, Benefits and Travel	\$41,163,409	\$3,370,552	\$15,121,419	\$1,668,861	\$3,160,582	\$23,321,414	\$64,484,823
Children's Foster and Institutional Care	50,914,926	441,840	723,547	0	0	1,165,387	52,080,313
Children's Services Contract	4,655,759	1,779,996	516,020	698,291	763,195	3,757,502	8,413,261
Children's Medical Services	0	96,400	198,282	0	0	294,682	294,682
General and Administrative	1,888,930	779,770	1,595,794	0	228,000	2,603,564	4,492,494
TOTAL	\$98,623,025	\$6,468,558	\$18,155,062	\$2,376,152	\$4,151,777	\$31,142,549	\$129,765,574

* DFPS fiscal year: September 1, 2008 - August 31, 2009
DFPS funding sources: state and federal government.

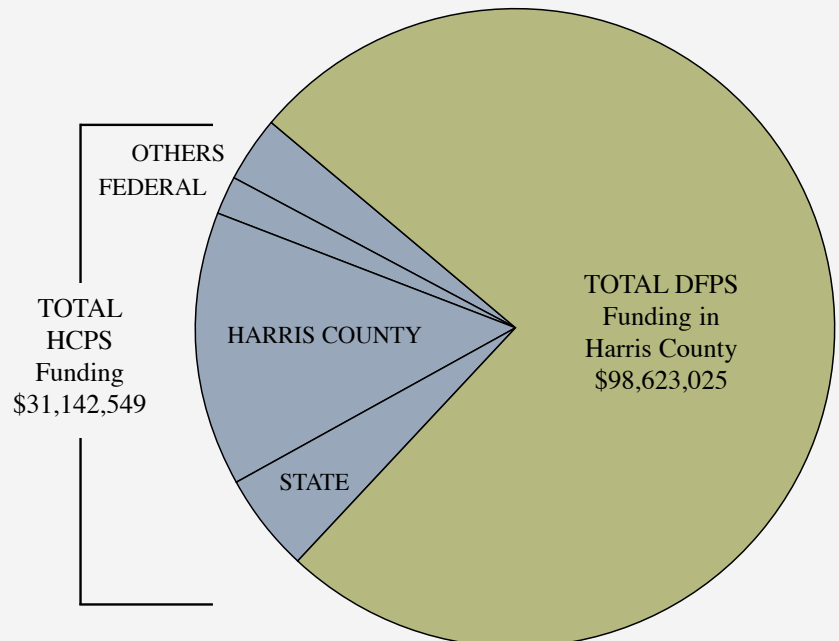
** HCPS fiscal year: March 1, 2009 - February 28, 2010
HCPS funding sources: state, county, federal government
and other sources such as grants and foundations.



PHOTO COURTESY OF THE HOUSTON CHRONICLE

Louvenia Posey, born April 5, 1900, is the oldest ward ever of Harris County's Guardianship Program. She celebrated her 110th birthday at the Windsong Village Convalescent Center in Pearland, where she resides.

Ms. Posey celebrated with a party, attended by her caseworker, friends and staff. She also received a letter from President Obama congratulating her on her birthday.



AGENCY PHONE NUMBERS AND WEB SITES

AGENCY PHONE NUMBERS

Texas Abuse Hotline (children & adults)	1-800-252-5400
Baby Abandonment Hotline	1-877-904-SAVE
BEAR...BE A Resource for CPS Kids	713-940-3073
Child Protective Services (DFPS) Point of Entry	713-295-2650
Children's Crisis Care Center (4C's)	713-394-4402
Clinic	713-295-2570
Community Youth Services	713-295-2530
Foster and Adoption Inquiry Line	1-800-233-3405
Gulfton Youth Development Program	713-660-8008
Guardianship Program	713-363-2300
PO Box 20605, Houston, TX 77225	
Harris County Protective Services for Children and Adults	713-394-4000
Harris County Youth Services Center	713-295-2500
6300 Chimney Rock, Houston, TX 77081	
Houston Alumni & Youth (HAY) Center/Preparation for Adult Living (PAL).....	713-884-3300
Kinder Emergency Shelter	713-295-2700
Preparation for Adult Living	713-295-2741
Pasadena Youth Development Program	713-473-8393
Services to At-Risk Youth (STAR)	713-664-3459
Texas Department of Family and Protective Services	512-438-4800
Texas Runaway Hotline	1-888-580-4357(HELP)
TRIAD Prevention Program	713-295-2600
Systems of Hope	713-795-HOPE

AGENCY WEB SITES

Harris County Protective Services for Children and Adults	www.hc-ps.org
Texas Department of Family and Protective Services	www.dfps.state.tx.us
To Report abuse on a secure web site	www.txabusehotline.org
Child Abuse Prevention.....	www.itsuptoyou.org
BEAR...BE A Resource for CPS Kids	www.bearesourcehouston.org
Texas Adoption Resource Exchange	www.adoptchildren.org
To Volunteer	www.volunteerdfps.org
Systems of Hope	www.systemsofhope.org
Houston Alumni & Youth (HAY) Center.....	www.haycenter.org



CPS IN HARRIS COUNTY

2525 Murworth Drive • Houston, Texas 77054 • 713-394-4000

To report abuse and neglect: 1-800-252-5400 • www.txabusehotline.org